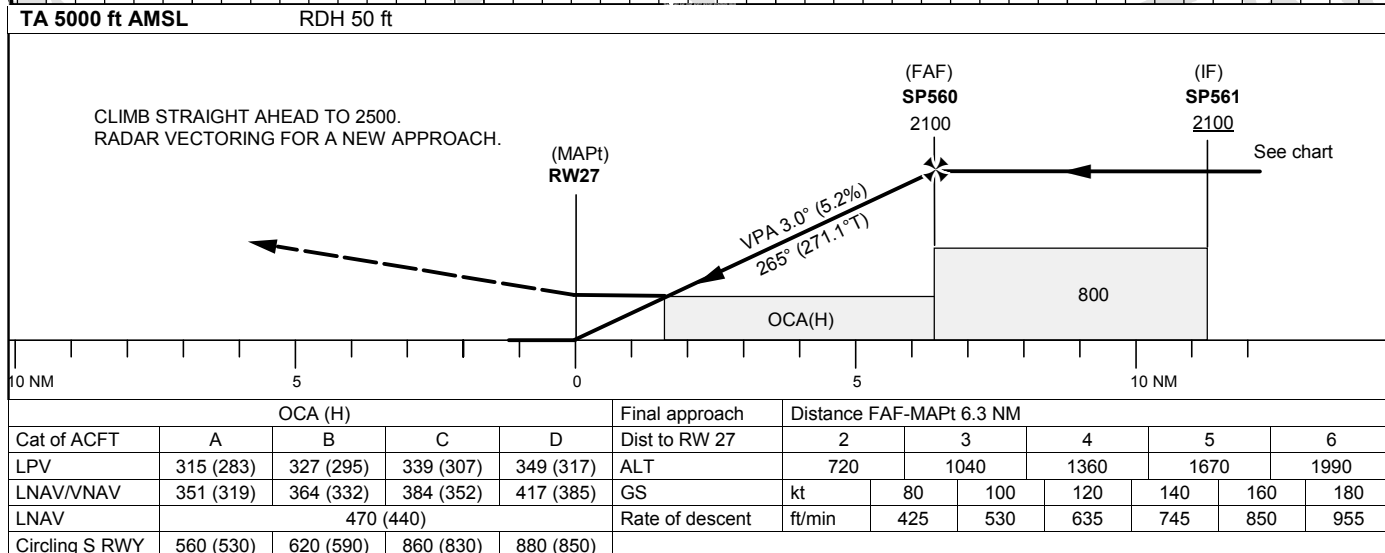
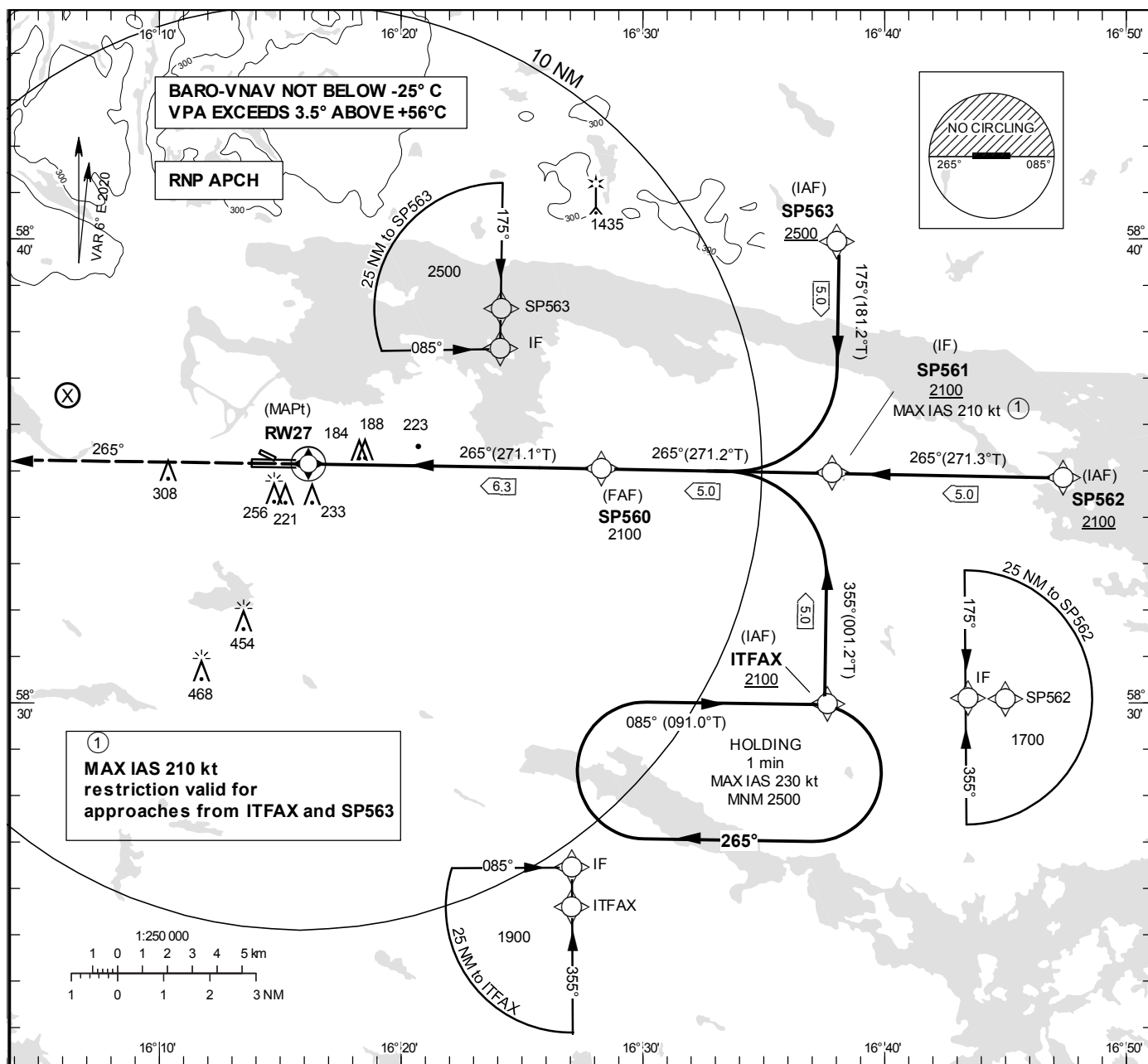


INSTRUMENT
APPROACH
CHART – ICAO

THR ELEV 32.3 ft, AD ELEV 32 ft
OCH are related to THR.
BRG are MAG (True).
ALT, HGT and ELEV in ft.

KUNGSÄNGEN TOWER 120.355
ÖSTGÖTA APPROACH 132.955



CHANGE: Editorial

NORRKÖPING/Kungsängen**RNP RWY 27 via SP562**

| Path Desc | Waypoint Identifier | Fly-over | Course °M(°T) | Dist (NM) | Turn Dir | Altitude | Speed | VPA/RDH | Rec Navaid | Navigation Specification |
|-----------|---------------------|----------|---------------|-----------|----------|----------|-------|---------|------------|--------------------------|
| IF | SP562 | - | - | - | - | +2100 | - | - | - | RNP APCH |
| TF | SP561 | - | 265°(271.3°) | 5.0 | - | +2100 | - | - | - | RNP APCH |

RNP RWY 27 via SP563

| Path Desc | Waypoint Identifier | Fly-over | Course °M(°T) | Dist (NM) | Turn Dir | Altitude | Speed | VPA/RDH | Rec Navaid | Navigation Specification |
|-----------|---------------------|----------|---------------|-----------|----------|----------|-------|---------|------------|--------------------------|
| IF | SP563 | - | - | - | - | +2500 | - | - | - | RNP APCH |
| TF | SP561 | - | 175°(181.2°) | 5.0 | - | +2100 | -210 | - | - | RNP APCH |

RNP RWY 27 via ITFAX

| Path Desc | Waypoint Identifier | Fly-over | Course °M(°T) | Dist (NM) | Turn Dir | Altitude | Speed | VPA/RDH | Rec Navaid | Navigation Specification |
|-----------|---------------------|----------|---------------|-----------|----------|----------|-------|---------|------------|--------------------------|
| IF | ITFAX | - | - | - | - | +2100 | - | - | - | RNP APCH |
| TF | SP561 | - | 355°(001.2°) | 5.0 | - | +2100 | -210 | - | - | RNP APCH |

| Path Desc | Waypoint Identifier | Fly-over | Course °M(°T) | Dist (NM) | Turn Dir | Altitude | Speed | VPA/RDH | Rec Navaid | Navigation Specification |
|-----------|---------------------|----------|---------------|-----------|----------|----------|-------|---------|------------|--------------------------|
| IF | SP561 | - | - | - | - | +2100 | - | - | - | RNP APCH |
| TF | SP560 | - | 265°(271.2°) | 5.0 | - | @2100 | - | - | - | RNP APCH |
| TF | RW27 | Y | 265°(271.1°) | 6.3 | - | @83 | - | -3.0/50 | - | RNP APCH |
| CA | - | - | 265°(270.7°) | - | - | @2500 | - | - | - | RNP APCH |
| VM | - | - | 265° | - | - | - | - | - | - | RNP APCH |

ESSP Holding ITFAX

| Path Desc | Waypoint Identifier | Fly-over | Course °M(°T) | Dist (NM) | Turn Dir | Altitude | Speed | VPA/RDH | Rec Navaid | Navigation Specification |
|-----------|---------------------|----------|---------------|-----------|----------|----------|-------|---------|------------|--------------------------|
| HM | ITFAX | Y | 085°(091.0°) | - | R | +2500 | -230 | - | - | RNAV 1 |

FAS Data Block

RNP RWY 27

Input data

| | |
|-------------------------------------|---------------|
| Operation Type | 0 |
| SBAS Provider | 1 (EGNOS) |
| Airport Identifier | ESSP |
| Runway | 27 |
| Runway Letter | 0 (None) |
| Approach Performance Designator | 0 |
| Route Indicator | |
| Reference Path Data Selector | 0 |
| Reference Path Identifier | E27A |
| LTP/FTP Latitude | 583508.9245N |
| LTP/FTP Longitude | 0161610.5280E |
| LTP/FTP Ellipsoidal Height (metres) | 37.8 |
| FPAP Latitude | 583510.0090N |
| Delta FPAP Latitude (seconds) | 1.0845 |
| FPAP Longitude | 0161354.0760E |
| Delta FPAP Longitude (seconds) | -136.4520 |
| Threshold Crossing Height | 50.0 |
| TCH Units Selector | 0 (feet) |
| Glidepath Angle (degrees) | 3.00 |
| Course Width (metres) | 105.00 |
| Length Offset (metres) | 0 |
| HAL (metres) | 40.0 |
| VAL (metres) | 50.0 |

Output data

| | |
|----------------------|--|
| Data Block | 10 10 13 13 05 1B 00 00 01 37 32 05 F9 6D 24 19 40 6E FB 06 7A 15 79 08 00 F8 D5 FB F4 01 2C 01 64 00 C8 FA F6 84 F5 2A |
| Calculated CRC Value | F684F52A |
| Supplied CRC Value | F684F52A |
| Comparison Result | OK |

Required Additional Data

| | |
|-------------------------------------|-----|
| ICAO Code | ES |
| LTP/FTP Orthometric Height (metres) | 9.8 |